



ESG SOLUTIONS SERIES

The Intelligent ESG Reporting Platform

Regulators (SGX), multinational clients and employees increasingly seek transparency from companies on their progress in managing environmental, social, and governance (ESG) goals and issues.

The Qubix Intelligent ESG Reporting Platform is an end-to-end solution for analyzing and executing ESG goals powered by Oracle-NetSuite.

ESG REPORTING SERIES

Challenges

91%

of business leaders are facing major challenges in making progress on sustainability and ESG initiatives *

What is holding you back from making the progress you want against your ESG priorities?

Operationally, managing the data and metrics around ESG initiatives is a costly and complex challenge. Data and metrics are a big part of the problem, as data comes from many sources and departments within the company and externally. There is also the challenge of reporting across multiple ESG frameworks and standards.

Challenges faced by business leaders.



35%

Challenges in obtaining ESG metrics from partners and other third-parties.



32%

Time consuming and highly manual process to validate and report on metrics.



31%

Complexities of integrating data from across global supply chains



32%

Being able to pull data from multiple areas of the business and different systems

*Source: 2022 [Savanta Research Report](#) "No Planet B. How can businesses and technology help save the world?"

ESG REPORTING SERIES

SGX - ESG

27

Starting in 2022 the SGX now requires all listed companies to disclose at least twenty-seven critical ESG sustainability metrics.

SGX has introduced a phased approach to mandatory climate reporting based on the recommendations of the Task Force on Climate-related Financial Disclosures (“TCFD”). The first phase is live now and listed companies must disclose several core ESG metrics.

Core ESG Metrics for SGX

Environmental	Social	Governance
Green House Gas	Gender Diversity	Board Composition
Energy Consumption	Age Diversity	Management Diversity
Water Consumption	Employment	Ethics
Waste Generation	Training & Development	Framework Alignment

Smaller businesses be ready.

If you are a supplier to a listed business, they will soon be asking you to provide ESG information, so now is the time to prepare.

ESG REPORTING SERIES

Pre-Configured Solution



Pre-Configured Solution Options

Qubix has developed a pre-configured solution to reduce the cost and complexity of meeting the SGX ESG reporting requirements powered by Oracle-NetSuite.

The solution will capture ESG *actuals* directly from source systems, via manual input in web forms and Excel uploads. It automatically compares the actuals to your planned ESG metrics indicating whether you're on track to meeting your targets.

Designed specifically to meet the SGX requirement and includes the ability to expand the platform to incorporate GRI and SASB frameworks.

Solution Highlights

- Pre-configured to accelerate deployment times and reduce costs.
- Hosted on Oracle-NetSuite cloud for maximum security and performance.
- Pixel perfect pre-built reports and the ability to export reporting data.
- Several options to customize and expand the applications functionality.

Qubix Sustainability Report

Our Sustainability Reporting Suite includes multiple resources available online that explain our approach to help build a more sustainable food system. This document reflects progress against our sustainability goals, as they were structured in 2020. Qubix actively reviews and updates the methodologies for calculating the metrics set forth in this report. From time to time, metrics reported for prior periods may change due to enhanced data availability or methodological adjustments. For details on how we measure performance against these goals, see the Calculation Methodology page on ESG Topics A-Z.

Target Metrics	2016	2017	2018	2019	2020	2020 Target	2020 Comments
Achieve 100% sustainably sourced ¹ potatoes, whole corn, oats and oranges by 2020 ²	0%	24%	51%	Nearly 80%	Nearly 87% ³	100%	In the course of making significant progress toward our 2020 Agriculture goals, we encountered systemic barriers related to cultural norms, sociopolitical disruption, infrastructure deficiencies and, in some cases, lack of well-established legal systems. These systemic barriers prevented us from achieving 100%.
Achieve 100% sustainably sourced ⁴ palm oil by 2020 ⁵	16%	32%	52%	82%	99% ⁶	100%	

The solution runs on the market-leading Oracle NetSuite ERP and NSPB products. It includes the option to start with a base reporting solution and expand into a comprehensive *Intelligent ESG Reporting Platform*.

ESG REPORTING SERIES

Intelligent ESG Platform



What is an Intelligent ESG Platform?

First, let's recap the critical questions that sustainability leaders need to answer.

How do you plan to collect, convert, standardize, and aggregate ESG data for a comprehensive, consistent picture of your organization?

How do you ensure the integrity of the data being used and validate consistency in the reporting of key metrics and KPIs?

How do you future-proof your ESG analytics against highly-anticipated framework changes?

How will you integrate your core ESG objectives with your operational planning, especially financial planning?

An *Intelligent ESG Platform* goes beyond point solutions for ESG reporting with a design focused on automation, advanced modelling capabilities, and fully integrating ESG objectives into all core financial and non-financial planning and reporting.

- **Automate to reduce costs and time** - many ESG processes, including the collection and validation of data, can be automated to reduce costs and errors and save time.
- **Advanced modelling** - leverage advanced data-science capabilities including "Goal-Seek", "What-If", and predictive modelling to set, validate and monitor targets.
- **Connected ESG planning & reporting** - the most successful sustainable businesses connect all lines of business to ESG objectives, so all stakeholders are aligned.

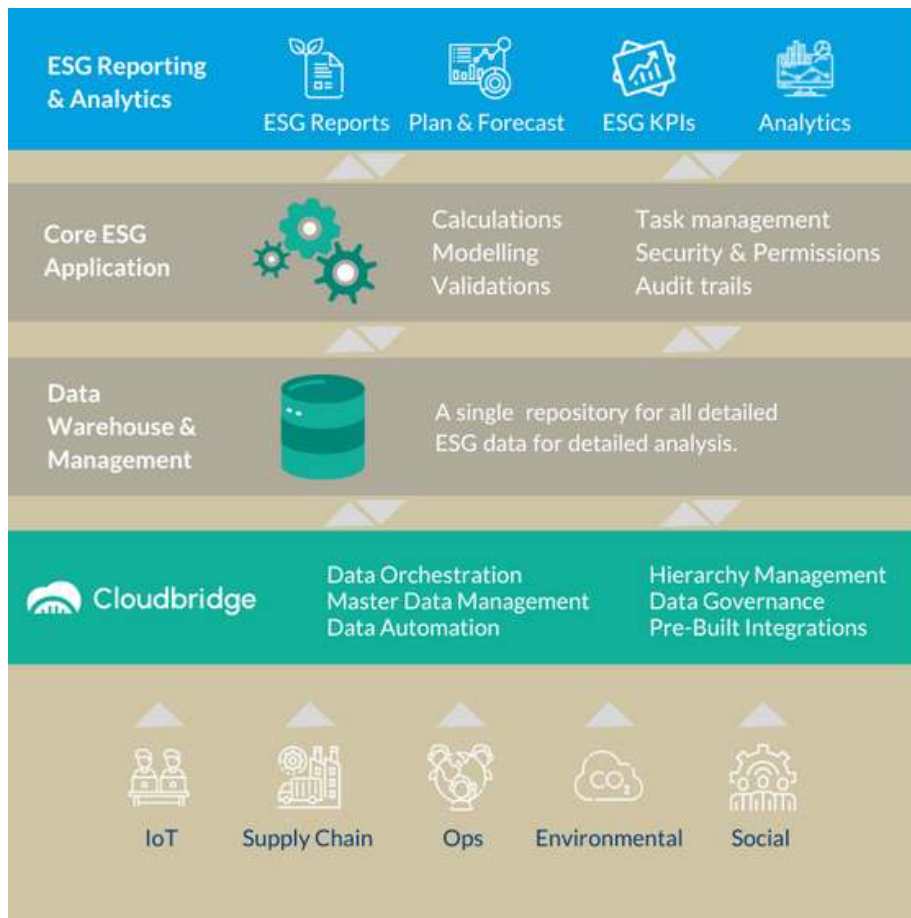
Solution Highlights

- Pre-configured ESG reporting frameworks.
- Configurable to any sustainability standard (GRI, SASB, TCFD, ...)
- Integrate data from any source and automate data collection and validations.
- Align ESG reporting and target setting across ERP, HCM, Supply Chain etc.
- Improve operational decisions with built-in advance modelling.
- Rich, highly formatted and interactive reporting options to meet every reporting need.

ESG REPORTING SERIES

Solution Highlights

Solution Overview



Highlights:

Target Setting

- Set a broad range of driver-based targets to achieve your ESG objectives.
- Provide what-if and scenario modelling capabilities.

Data Orchestration & Automation

- Automate data collection from multiple sources and departments.

Single Source of the Truth

- Embed live ESG data into distributed reports and into Microsoft Office documents.

Now is the time to act.

People are ready to cut ties with brands that don't act now. 70% of people are willing to cancel their relationship with a brand that does not take ESG initiatives seriously, and 69% would leave their current company to work for a brand that focuses more on delivering their ESG priorities.

ESG REPORTING SERIES

The Benefits

89%

of business leaders believe that ESG initiatives are a critical part of their success in...



40%

Strengthening the brand.



39%

Increasing productivity.



34%

Increasing profitability.



38%

Attracting new customers.

The business case for change.

There is a cost and a burden to meet the increasing regulatory demands for ESG content, but this cost can be substantially reduced with the Qubix ESG reporting solution powered by Oracle-NetSuite.

A successful ESG strategy could increase brand value, attract new customers and improve profitability.

Source Data: 2022 [Savanta Research Report](#) "No Planet B. How can businesses and technology help save the world?"

WHY WORK WITH QUBIX?

Intelligent ESG Solutions.

Qubix is an award-winning global finance systems consultancy with 1,000+ successful ERP, Performance Management and Analytics engagements.

Delivering your sustainable future.

The Qubix approach to *Intelligent ESG Reporting* brings together finance and sustainability leaders and connects them to all lines of business, so all ESG stakeholders work harmoniously to execute the same ESG priorities.

Our approach will enable you to streamline and automate as much of your ESG reporting as possible and ensure that your targets are realistic and achievable, increasing your probability of success. The Qubix solution is flexible, scalable and delivers critical capabilities to your business:

- Create and monitor organization-wide long-range sustainability plans.
- Automate as much data collection and validation as possible from any source system.
- Create a live link between your operational and financial plans and ESG targets.
- Improve operational decision-making with what-if and scenario modelling.
- Used advanced data-science capabilities like anomaly detection to improve forecasting.
- Use familiar tools like Microsoft Excel to embed live ESG data and perform ad-hoc analysis.
- Streamline and control the production of ESG reports and report packs.
- Take full control of the quality, reliability and audibility of ESG data.

We have a range of pre-configured solutions that can be deployed in days or weeks. Ask for a demo today.

HOW ELSE WE CAN HELP?

Business process knowledge and industry specific experience

- Driver-based Planning & Budgeting
- Strategic Workforce Planning
- Capital Expense Planning
- Project Financial Planning
- Financial Close Automation
- Account Reconciliation
- Cash Flow Forecasting
- Franchise / Group Reporting
- Board & Management Reporting
- Regulatory Reporting (GAAP / IFRS)
- Cost Allocations
- Customer Profitability
- KPI & Balance Scorecards
- HR Analytics
- Predictive Modelling
- M&A Modelling
- Debt, Liquidity & Capital Analysis
- Autonomous Data Warehouse
- Data Orchestration
- ESG Reporting



NatWest



Global contact details

Website
www.qubix.com

Email
sales@qubix.com

Telephone
Visit our website

Qubix

Copyright 2022, The Qubix Group.